

# COMPACT VALVE - 1/4

## Series DS2

Cat No DS2 - 01 - 16 - A

### COMPACT VALVE - G1/4

#### Features

- ❑ Suitable for manifold mounting
- ❑ Mounting provision for individual unit
- ❑ Compact size
- ❑ Manual override
- ❑ Wide range of manifolds available
- ❑ Wide range of coil voltages



#### Important

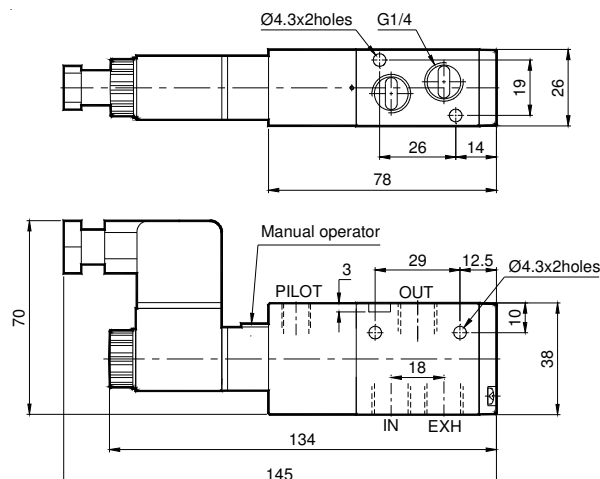
To prevent malfunctioning of the valve while operating the manual override (or) while operating the solenoid coil, ensure to have a minimum air supply of 800 lpm to the valve through a tube of minimum Ø8 outer diameter (with minimum Ø5.5 internal diameter)

#### Technical Specification

Model	DS2	
Type	3/2	5/2
Design	Spool type	
Port Size	Inlet (1), Outlet (2), Exhaust (3) - <b>G1/4</b> , Pilot (14, 12) - <b>G1/8</b>	Inlet (1), Outlet (2,4) - <b>G1/4</b> , Exhaust (3,5), Pilot (14, 12) - <b>G1/8</b>
Medium	Compressed air, filtered, lubricated	
Maximum working pressure	10 bar	
External pilot pressure range	2 to 10 bar	
Recommended oil for lubrication	ISO VG32 (Servo system 32)	
Ambient / Medium temperature	5° - 60° C	
Flow <sup>@</sup>	1000 lts/min	
Materials of construction	Aluminium, Nitrile, Brass, Acetal, PBT, Zinc	
<b>Electrical</b>		
Coil width	22 mm	
Voltage (V) ± 10%	AC ( 50 Hz ) - 24, 48, 110, 220	
	DC - 12, 24, 48, 110	
Power consumption	AC - 6 VA, DC - 5 W	
Duty cycle	Continuous	
Class of insulation	Class F	
Type of coil protection	IP65	

@ Inlet pressure 6 bar, and pressure drop 1 bar

### 3 / 2 Single external solenoid pilot operated valve with spring return



1 - Inlet, 2 - Outlet, 3 - Exhaust, 14 - Pilot

Ordering No*	DS235TR61	DS245TR61
Type	Normally open	Normally closed
Symbol		

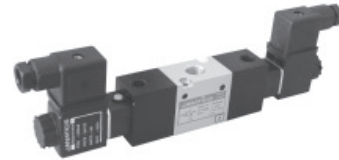
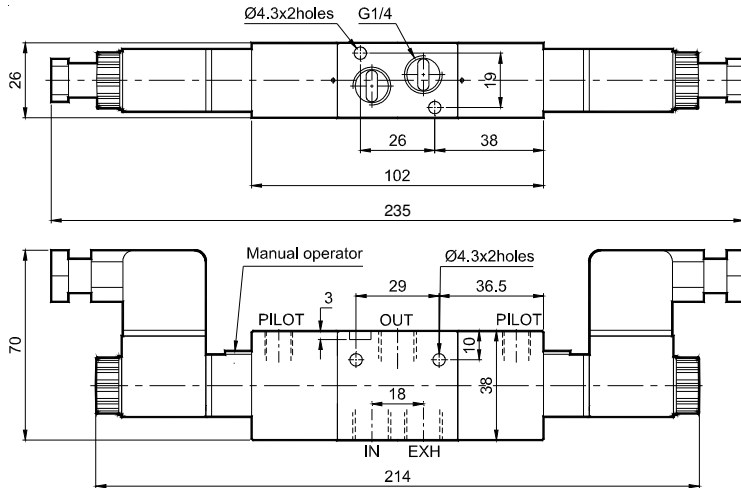
\* For ordering no., voltage to be added.

# COMPACT VALVE - 1/4

## Series DS2

Cat No DS2 - 01 - 16 - A

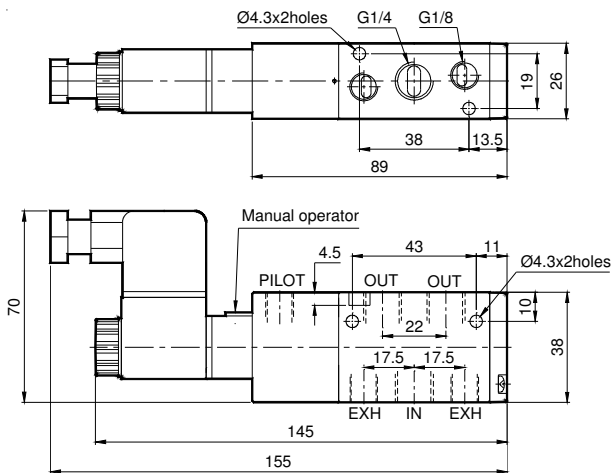
### 3 / 2 Double external solenoid pilot operated valve



1 - Inlet, 2,4 - Outlet, 3,5 - Exhaust, 14,12 - Pilot

Ordering No*	DS235TT61	DS245TT61
Type	Normally open	Normally closed
Symbol		

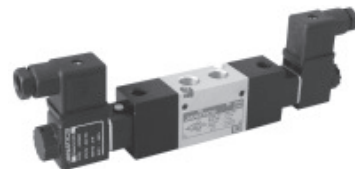
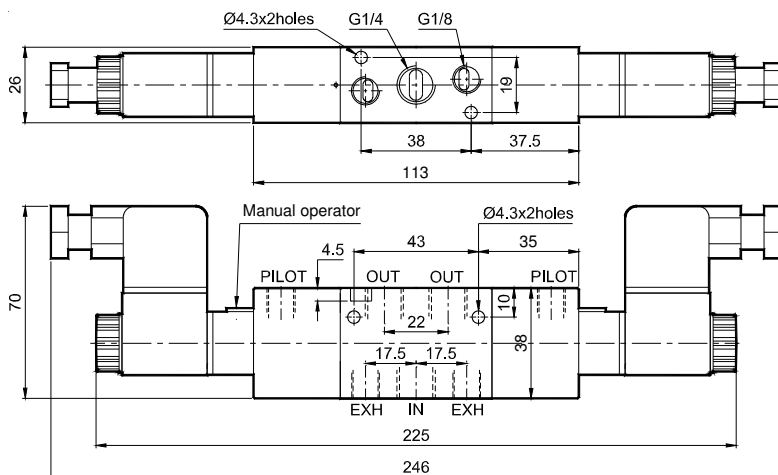
### 5 / 2 Single external solenoid pilot operated valve with spring return



1 - Inlet, 2,4 - Outlet, 3,5 - Exhaust, 14 - Pilot

Ordering No*	DS255TR61
Symbol	

### 5 / 2 Double external solenoid pilot operated valve



1 - Inlet, 2,4 - Outlet, 3,5 - Exhaust, 14,12 - Pilot

Ordering No*	DS255TT61
Symbol	

\* For ordering no., voltage to be added.

# COMPACT VALVE - 1/4

## Series DS2

Cat No DS2 - 01 - 16 - A

### How to order

#### 1. Solenoid valve + “ Connectors without LED ”

While ordering Solenoid operated valves, please mention the suffix given below along with the model number to indicate the required voltage

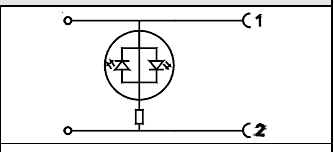
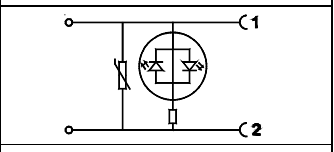
A	220V AC	Q	110V D C
B	110V AC	S	48V D C
D	48V AC	W	24V D C
G	24V AC	R	12V D C

#### Example

- The ordering no. for 3/2 NC Single external solenoid pilot valve, 24V D.C coil with PG cable is **DS245TR61-W**
- The ordering no. for 3/2 NC Single external solenoid pilot valve, 24V D.C coil with Moulded cable is **DS245TR61-W1**

#### 2. Solenoid valve + “ Connectors with LED ”

While ordering Solenoid operated valves with LED connectors, given below in the corresponding tables.

Voltage		Housing Colour & Indication		LED colour		Connection type		
A	220V AC	 Transparent housing with Bipolar LED indicator confirming supply voltage	R	Red	0	PG Cable entry		
G	24V AC		 Transparent housing with Bipolar LED indicator confirming supply voltage plus varistor to give over voltage protection to the source and load			1	Moulded cable (with 2metre length)	
W	24V DC							

#### Example

The Ordering no for 3/2 NC Single external solenoid pilot valve, 24V DC, connectors with LED of Transparent colour housing with Bipolar LED and varistor, Red colour LED with moulded cable: **DS245TR61-WT1R1**