

COMPACT VALVE - M5

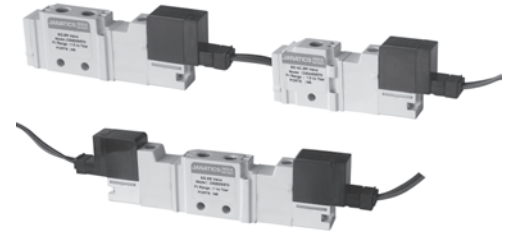
Series DS2

Cat No DS2 - 01 - 17 - A

COMPACT VALVE - M5

Features

- ❑ Suitable for manifold mounting
- ❑ Mounting provision for individual unit
- ❑ Compact size
- ❑ Manual override
- ❑ Wide range of manifolds available
- ❑ Wide range of coil voltages

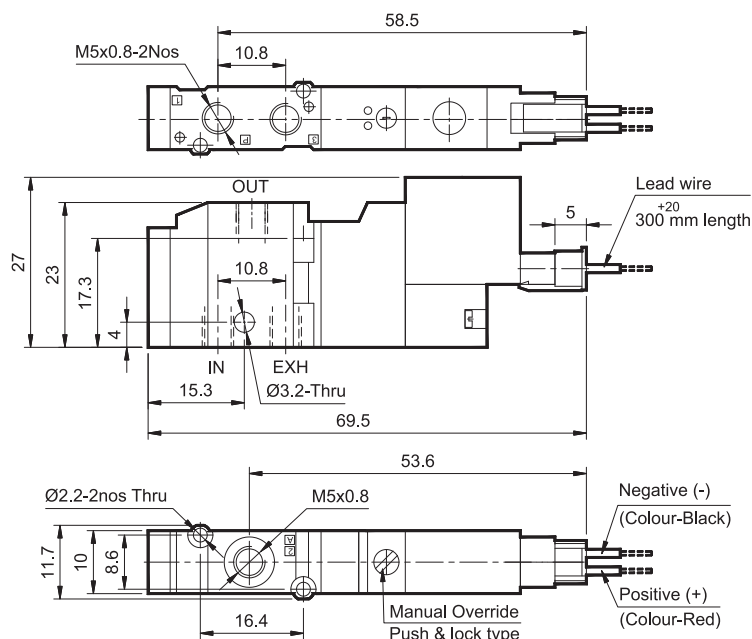


Technical Specifications

Model	DS2		
Type	3/2	5/2 SR	5/2 SS
Design	Spool type		
Port Size	Inlet, Outlet, Exhaust - M5		
Medium	Compressed air - Dry, filtered, lubricated		
Minimum working pressure	1.5 bar	1.5 bar	1 bar
Maximum working pressure	7 bar		
Recommended oil for lubrication	ISO VG32 (Servo system 32)		
Ambient / Medium temperature	5° - 50° C		
Flow @	140 lts/min		
Materials of construction	Aluminium, Nitrile, SS, Plastic		
Electrical			
Voltage (V) ± 10%	AC (50 Hz) -		DC
	110V	220V	12V, 24V
Power consumption	1 VA	2 VA	1 W
Current at rated voltage	45 mA		
Class of insulation	Class B		
Type of coil protection	IP65		

@ Inlet pressure 6 bar, and pressure drop 1 bar

3 / 2 Single Solenoid pilot operated valve with spring return



1 - Inlet, 2 - Outlet, 3 - Exhaust

Ordering No*	DS233SR70	DS243SR70
Type	Normally open	Normally closed
Symbol		

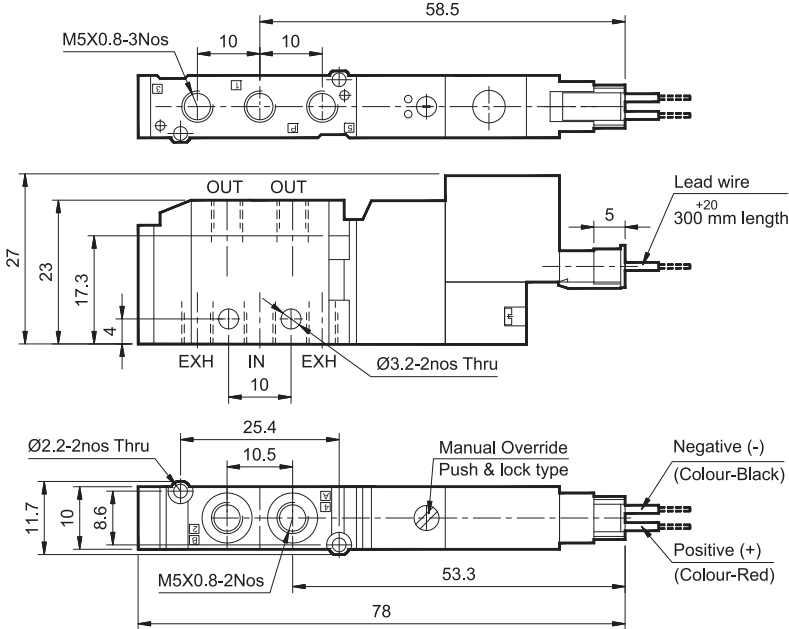
* For ordering No, voltage to be added

COMPACT VALVE - M5

Series DS2

Cat No DS2 - 01 - 17 - A

5 / 2 Single solenoid pilot operated valve with spring return

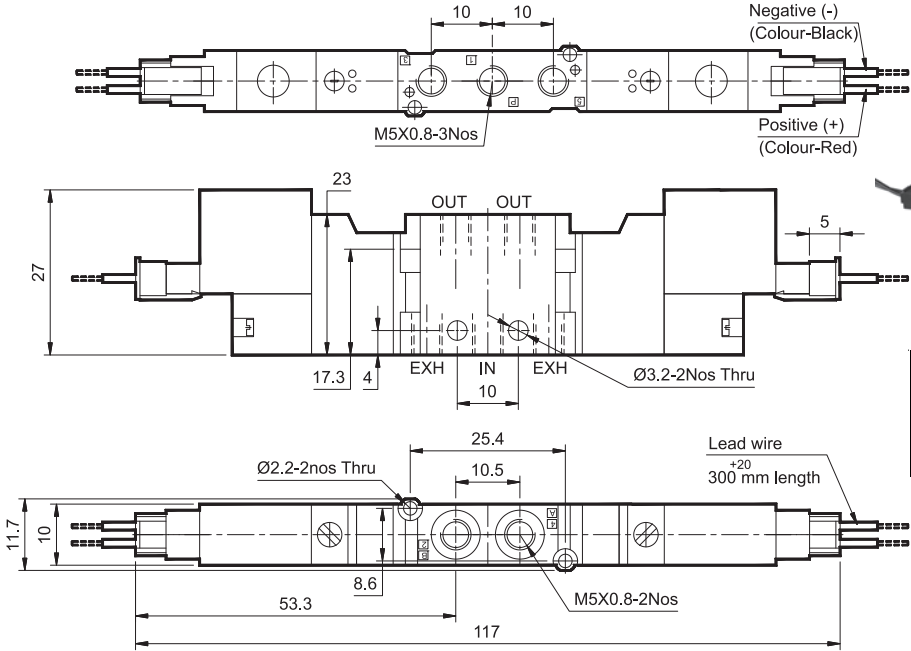


1 - Inlet, 2,4 - Outlet, 3,5 - Exhaust

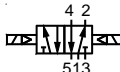
Ordering No*	DS253SR70
Symbol	

* For ordering No, voltage to be added

5 / 2 Double solenoid pilot operated valve



1 - Inlet, 2,4 - Outlet, 3,5 - Exhaust

Ordering No*	DS253SS70
Symbol	

* For ordering No, voltage to be added

How to order

While ordering Solenoid operated valves, please mention this suffix along with the model number to indicate the required voltage

A2	220V AC	W2	24V DC
B2	110V AC	R2	12V DC

Example: The ordering no. for 3 / 2 Single Solenoid pilot operated valve with spring return, with 24V DC coil is **DS243SR70-W2**

Subject to change