

# COMPACT VALVE - 1/4

## Series DS5

Cat No DS5 - 01 - 01

### COMPACT VALVE - G1/4

#### Features

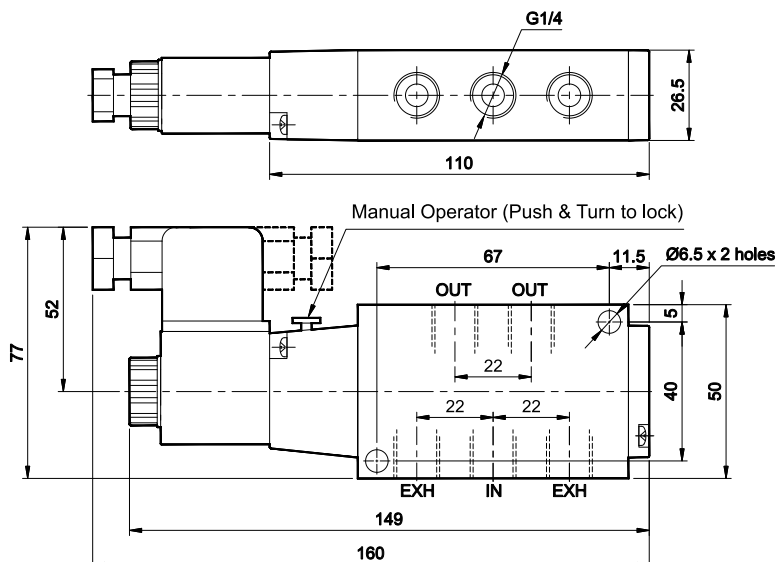
- Mounting provision for individual unit
- Compact size
- Manual override
- Wide range of coil voltages
- Suitable for manifold mounting (M004...series)

#### Technical Specifications

Model	DS5
Type	5/2
Design	Spool type
Port Size	Inlet, Outlet, Exhaust - G1/4
Medium	Compressed air filtered, lubricated
Minimum working pressure	2 bar
Maximum working pressure	10 bar
Recommended oil for lubrication	ISO VG32 (Servo system 32)
Ambient / Medium temperature	5° - 60° C
Nominal Flow <sup>®</sup>	1000 lts/min
Materials of construction	Aluminium, Nitrile, Brass, Acetal, PBT, Zinc, Steel
<b>Electrical</b>	
Coil width	22 mm
Voltage (V) ± 10%	AC ( 50 Hz ) - 24, 48, 110, 220
	DC - 12, 24, 48, 110
Power consumption	AC - 6 VA, DC - 5 W
Duty cycle	Continuous
Class of insulation	Class F
Type of coil protection	IP65
Cable entry (PG9)	Suitable for Ø6 to Ø8 OD Cable (2wire / 3wire)

@ Inlet pressure 6 bar, and pressure drop 1 bar

### 5 / 2 Single solenoid pilot operated valve with spring return



1 - Inlet, 2,4 - Outlet, 3,5 - Exhaust

Ordering No*	DS555SR61
Symbol	513

\* For ordering no, voltage to be added

# COMPACT VALVE - 1/4

## Series DS5

Cat No DS5 - 01 - 01

### How to order

#### 1. Solenoid valve + “ Connectors without LED ”

While ordering Solenoid operated valves, please mention the suffix given below along with the model number to indicate the required voltage

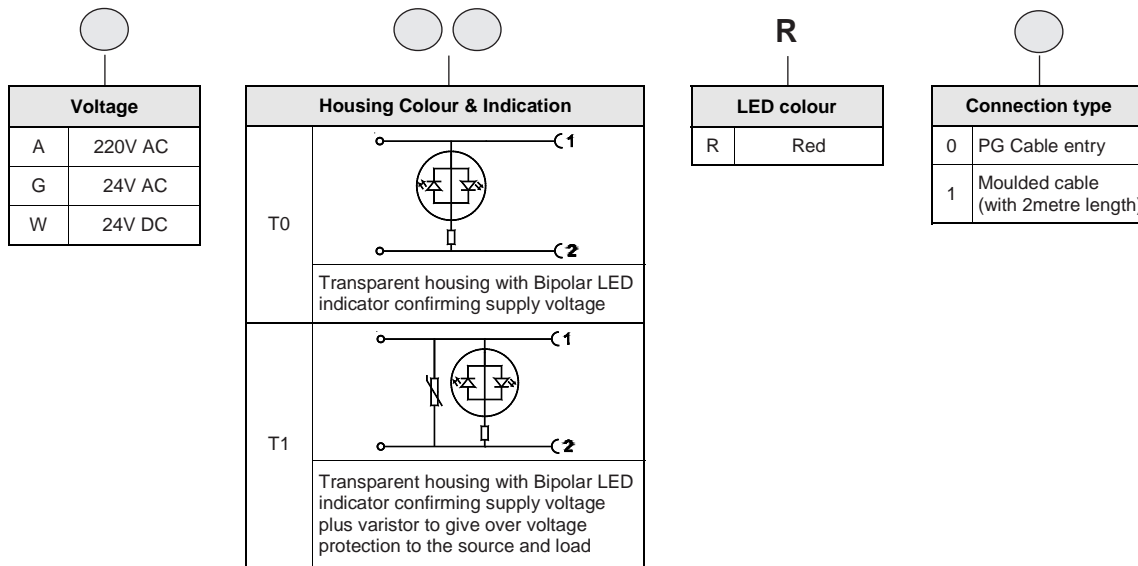
A	220V AC	Q	110V DC
B	110V AC	S	48V DC
D	48V AC	W	24V DC
G	24V AC	R	12V DC

#### Example

- The ordering no. for 5/2 Single solenoid valve, 24V D.C coil with PG cable is **DS555SR61-W**
- The ordering no. for 5/2 Single solenoid valve, 24V D.C coil with Moulded cable is **DS555SR61-W1**

#### 2. Solenoid valve + “ Connectors with LED ”

While ordering Solenoid operated valves with LED connectors, given below in the corresponding tables.



#### Example

The Ordering no for 5/2 Single solenoid valve (1/4"), 24V DC, connectors with LED of Transparent colour housing with Bipolar LED and varistor, Red colour LED with moulded cable: **DS555SR61-WT1R1**

#### Coil spare ordering no.

Coil ( without connector )	Ordering no.	
	AC	DC
220	AC23A	- NA -
110	AC23B	DC24Q
48	AC23D	DC24S
24	AC23G	DC24W
12	- NA -	DC24R